



# SPORT TRANSFER

---

sports equipment

SPORT-TRANSFER sp. z o.o.  
Jawornik 564  
32-400 Mysłenice  
Tel. +48 12 649 14 83  
e-mail: [biuro@sport-transfer.com.pl](mailto:biuro@sport-transfer.com.pl)

## INSTRUCTIONS FOR ASSEMBLY AND USE OF SPORTS EQUIPMENT

Product: **Beach football goal /5.49x2.21m/**  
Code: 15,901

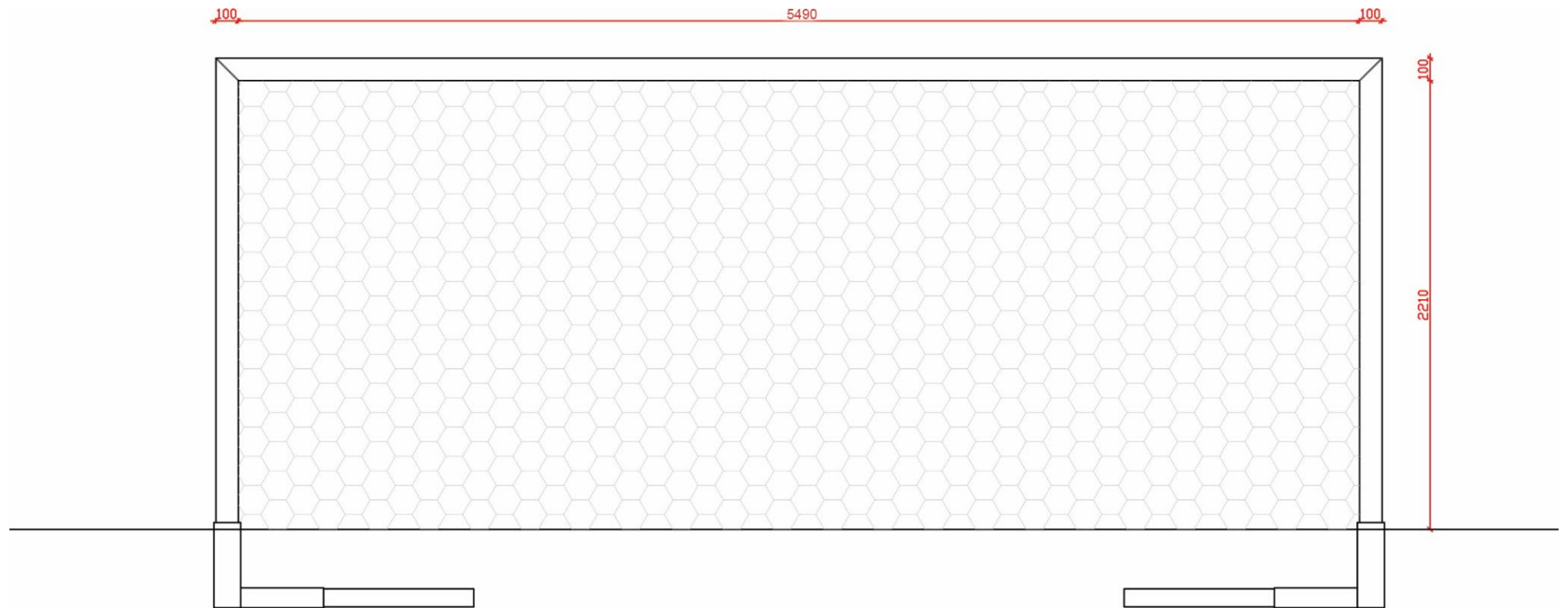
The beach football goal meets the requirements of the PN-EN 748 standard: "Playing field equipment - Football goals. Functional and safety requirements, test methods".

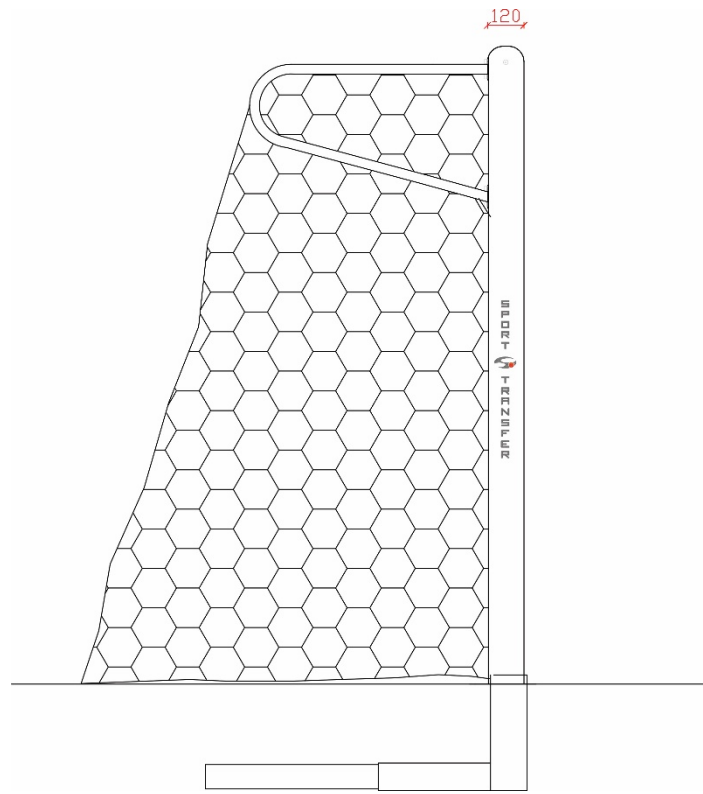
### 1. Components of the goal

Number	Part/subassembly name	Quantity per product
1	Goal crossbar	1
2	Goalpost /left, right/	2
3	Goal connector	2
4	Allen screw M8x16	8
5	Allen screw M8x20	8
6	Fixing block	8
7	PP hook	50
8	Mounting sleeve with cross-piece	2
9	Wooden beam	4
10	Goal arch /left, right/	2

## 2. Sleeve assembly

- a) Insert the sleeves (8) into the ground in an axial distance of 5590 mm.

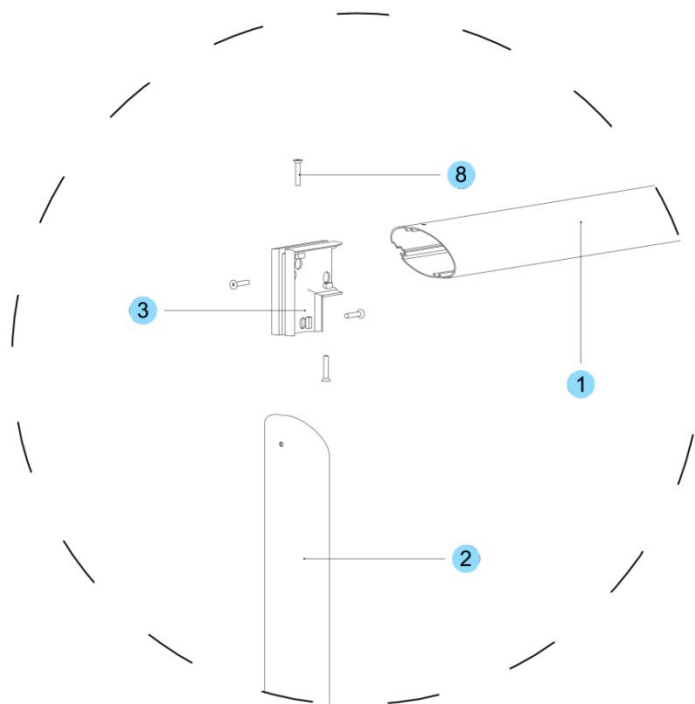




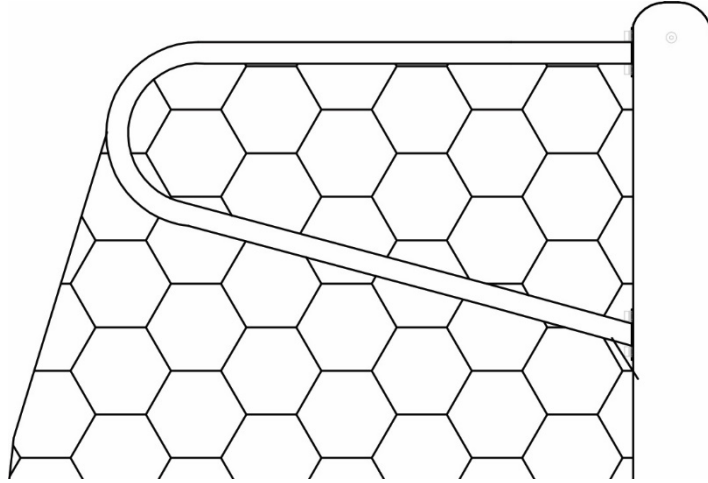
Upper edges of the sleeves must match the zero-level of the playground.

### 3. Goal assembly

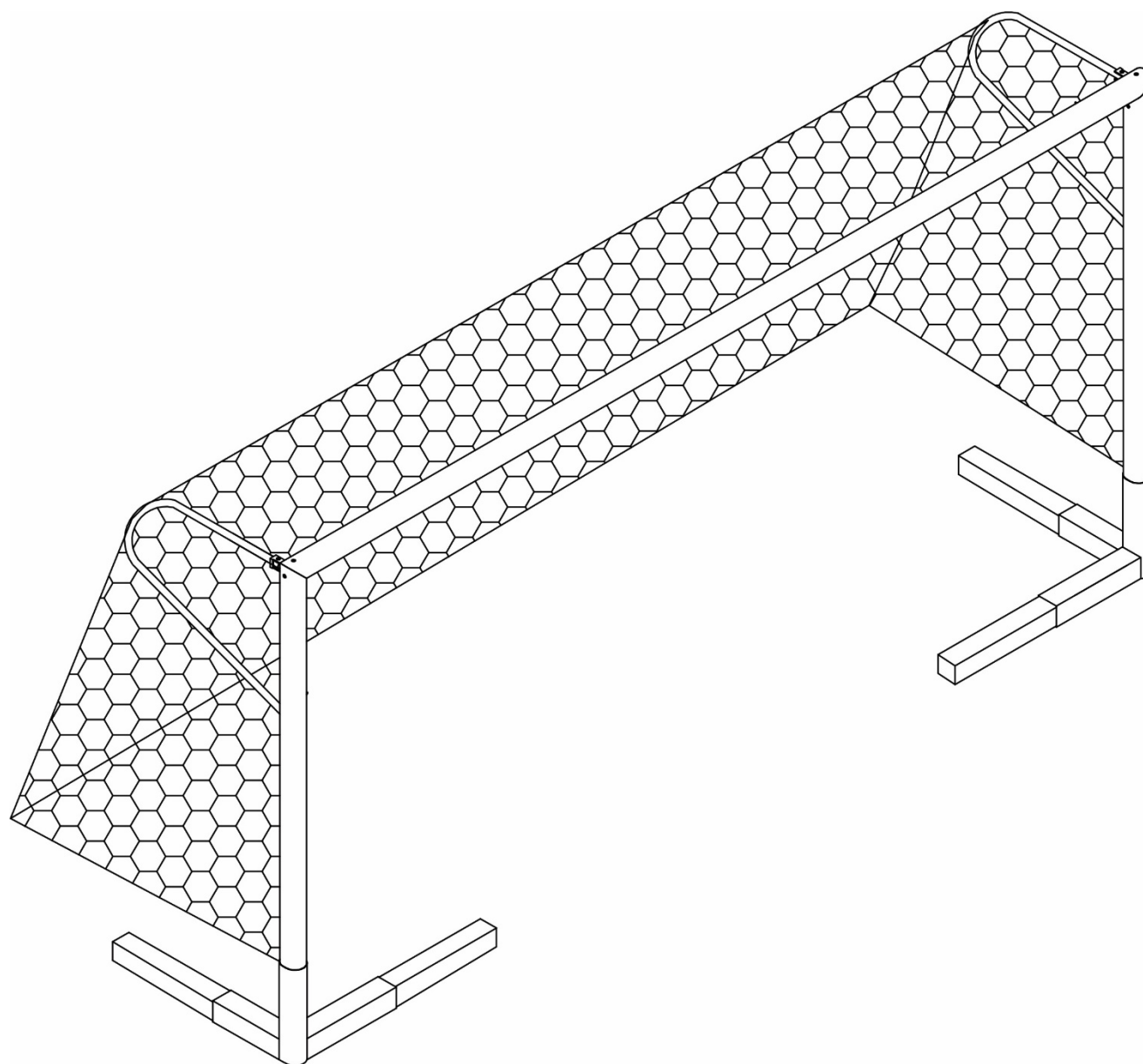
- a) Connect the goal crossbar (1) to the goalposts (2) using the goal connector (3) and fix by means of M8x16 Allen screws (8).



- b) Screw the gate arches (10) by means of M8x20 Allen screws (5) and fixing blocks with thread (6).

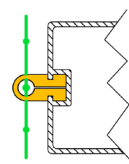
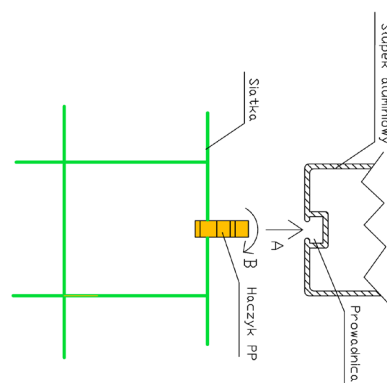


- c) Insert the goal into the mounted sleeves.



#### 4. Fastening the goal

- a) The net should be fastened to the goal crosspiece, goalposts, net with PP hooks at intervals of  $\sim 15$  cm. Put the hook on the edge wire of the net, put it into the embossing in the frame of the goal and the crossbar and turn it by  $90^\circ$ .
- b) Hang the upper part of the net on the arches screwed to the goal.
- c) Place the lower part of the net freely on the sand.



#### 5. Using the goal

- a) The goal is designed for playing beach football on open grounds.
- b) Before starting to use (i.e. after each assembly or adjustment of the goal) and periodically during operation (at least once a month), check and, if necessary, tighten the goal's fasteners.
- c) Only use the goal if it is fixed to the ground (according to the installation instructions) in such a way as to prevent it from sliding or tilting.

**ATTENTION: Do not climb or hang on any part of the goal and net.**