



SPORT-TRANSFER sp. z o.o.
Jawornik 564
32-400 Myślenice
Tel. + 48 12 649 14 83
e-mail: biuro@sport-transfer.com.pl

INSTRUCTIONS FOR ASSEMBLY AND USE OF SPORTS EQUIPMENT

Product: **Tennis nets**
Code: 802, 8081, 8091, 904, 9044, 910

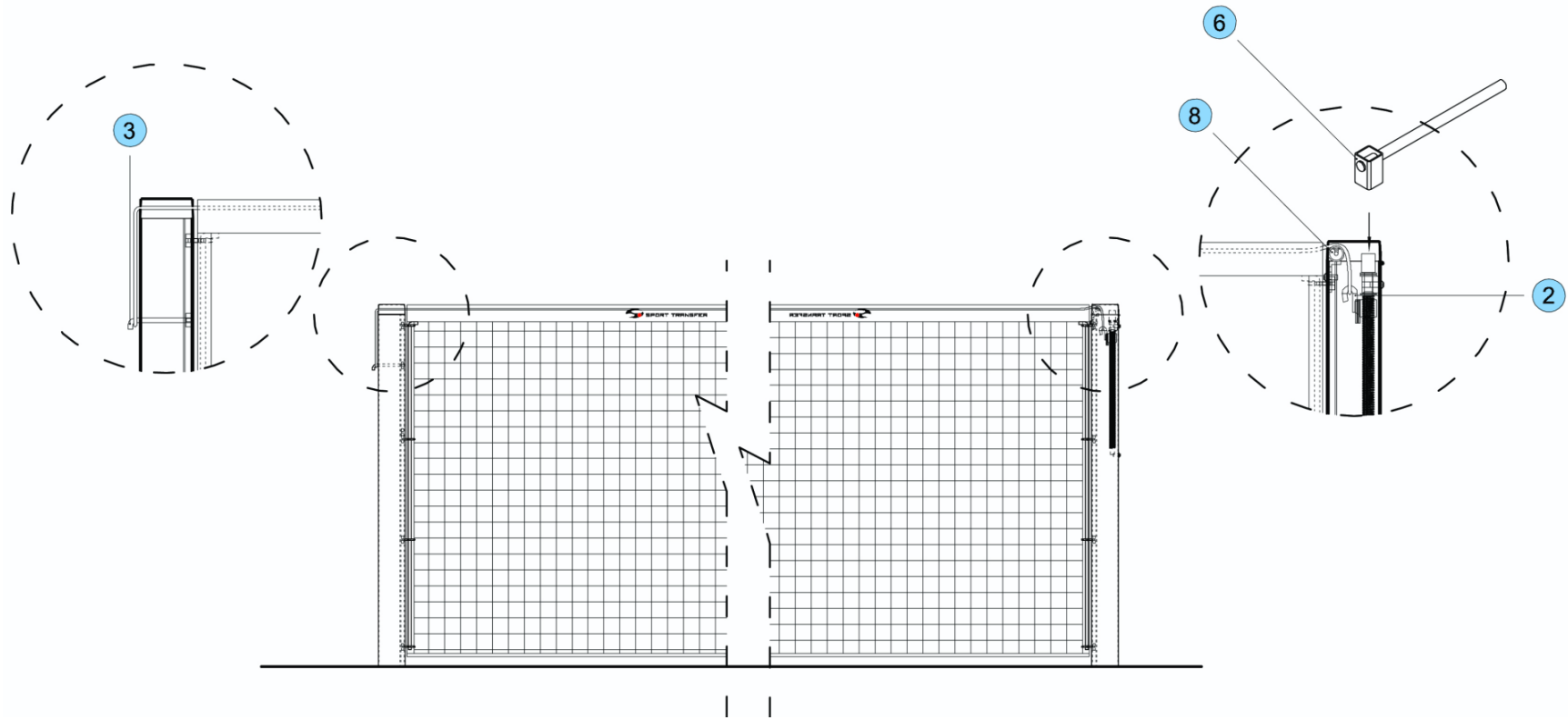
The tennis nets meets requirements of the PN-EN 913:2019-03 and PN-EN 1510:2006 standard: "Playing field equipment. Tennis equipment. Functional and safety requirements, test methods".

1. Components

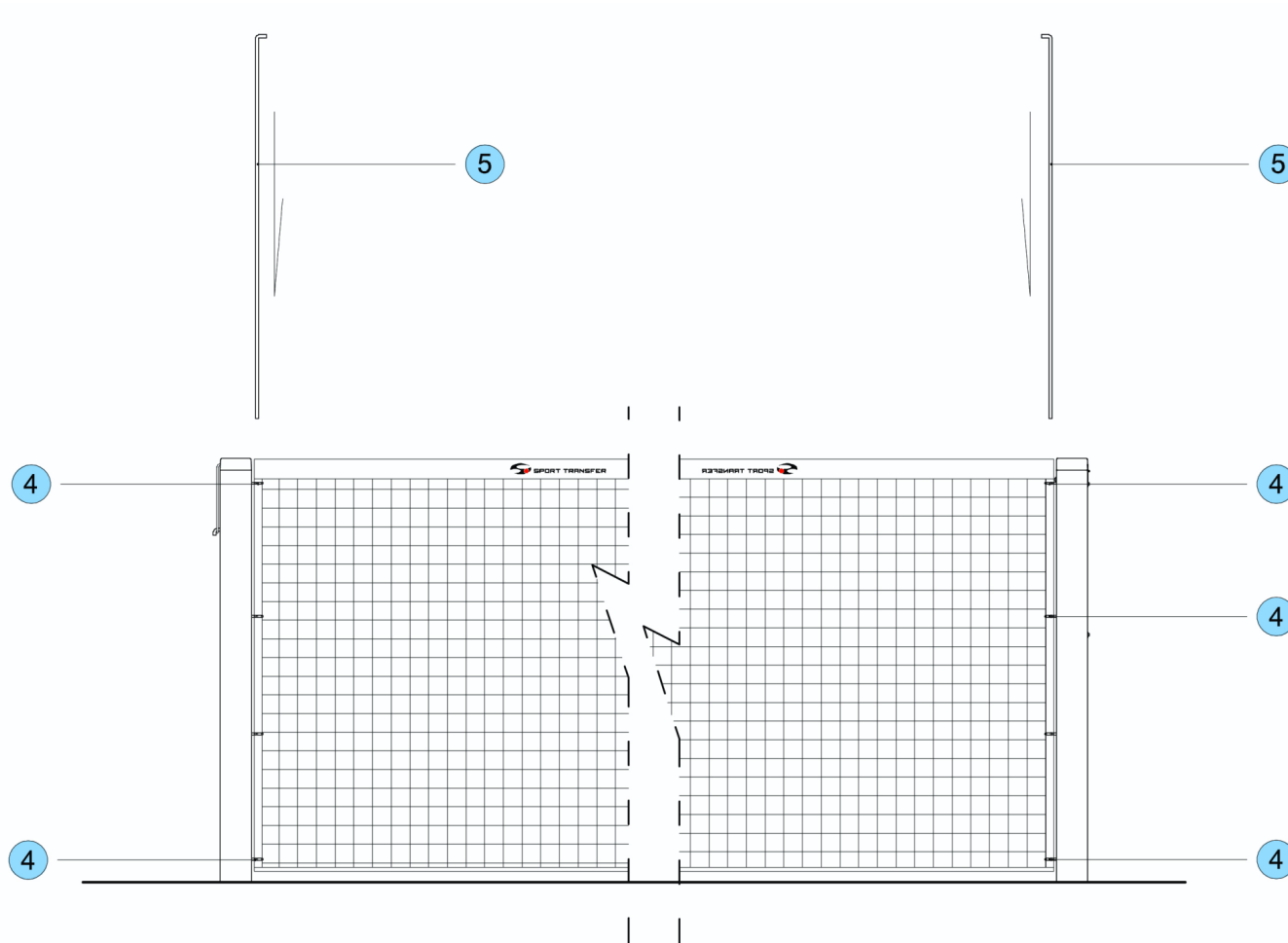
Number	Part/subassembly name	Quantity per product
1	Tennis net with a size of 12.72 m x 1.07 m	1

2. Net fastening

- Attach the net suspension line on the hook (3) of the post without the tensioning mechanism.
- Put the other end of the suspension line through the guide pulley (8) and hook onto the hook in the tensioning mechanism (2) of the second post - the screw from the tensioner should be in the highest position.
- By turning the crank (6) applied to the joint in the middle of the tensioning screw, tighten the net's suspension line. In a correctly tensioned net, the top edge of the net is 1.07 m high.



- d) After tensioning the suspension line, tension the net with the tension rods (5) put through the meshes of the net and the hooks of the rods (4) and tie the tension cords to the top of the posts so that the net is symmetrically aligned towards the longitudinal axis of the court.



3. Using the net

- a) Tennis nets are designed for playing tennis in halls, sports halls and outdoor facilities.
- b) Each time after the game is over, loosen the tension on the net suspension strand.

ATTENTION: Do not climb or hang on any part of the posts and net.